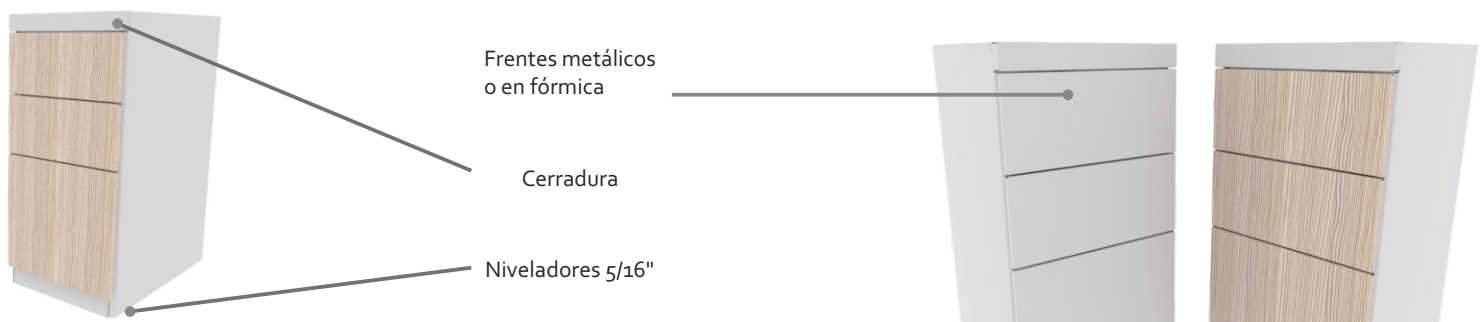
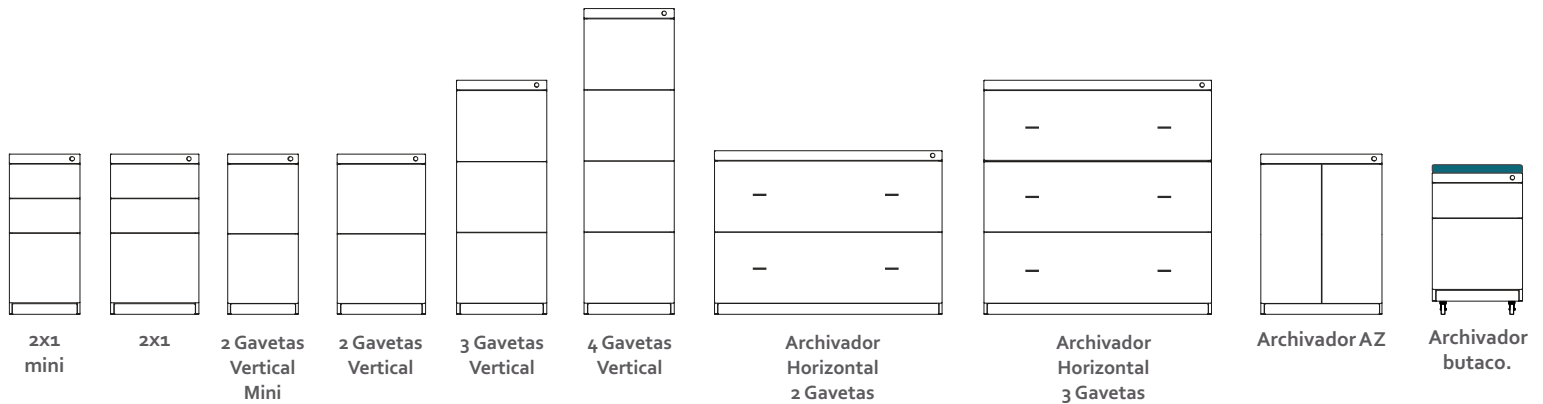


ALMACENAMIENTO

Archivadores

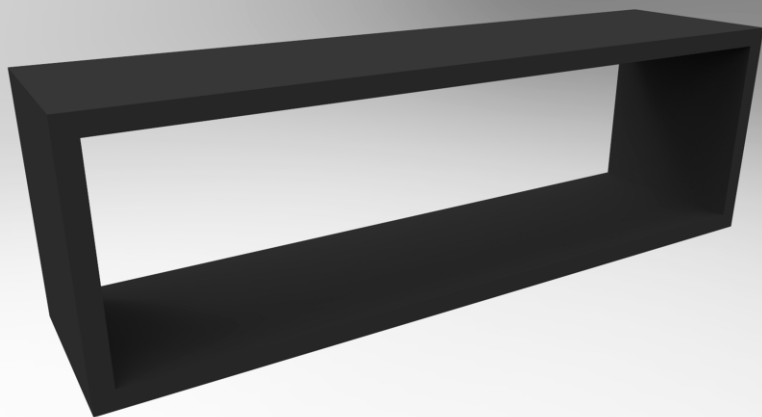
Archivadores fabricados en lámina CR Cal. 20 y 22, cajones con frentes metálicos o en fórmica, rieles full extensión y acabado en pintura electrostática.



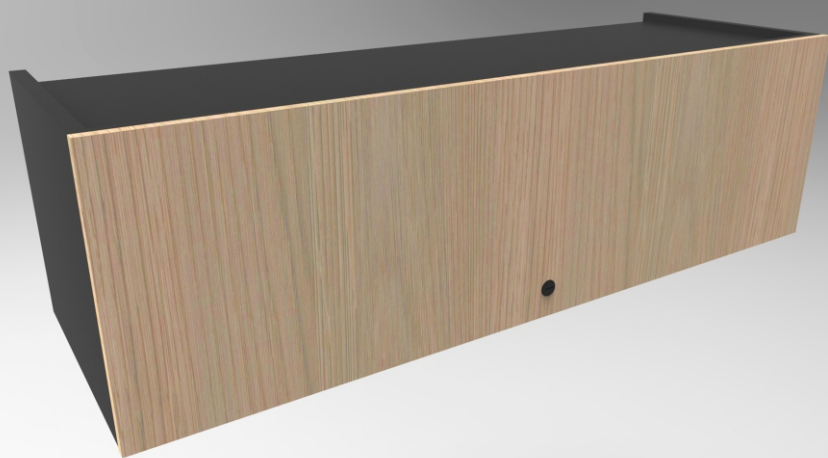
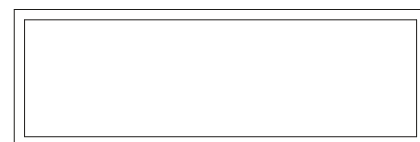
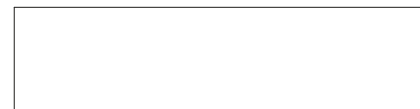
ALMACENAMIENTO

Gavetas y cubos

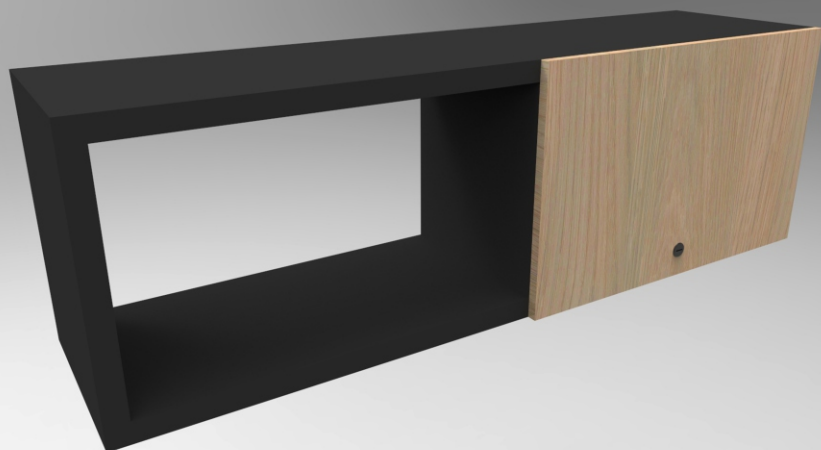
Gavetas fabricadas en lámina CR Cal. 18 con tapa en fórmica, brazos hidráulicos y cerradura; cubos fabricados en tablex 30mm enchapados en fórmica F8.



Repisa Cubo



Gaveta



Gaveta tapa media

